

**HEAVEN NIGHT CLUB**

10a The Arches, Villiers St, London, WC2N 6NG

Tel: +44 (0)20 7930 2020

Fax: +44 (0)20 7930 8306

## Venue Technical Specification

<b>CONTACTS</b>	<b>Page 1</b>
<b>VENUE INFORMATION</b> (rental fees, stage crew, ticketing, transport, past events)	<b>Page 2</b>
<b>LOAD IN</b> (address, details, times, parking)	<b>Page 3</b>
<b>STAGE</b> (size, clearance, power, barrier, etc.)	<b>Page 4</b>
<b>STAGE FLOOR PLAN</b>	<b>Page 4</b>
<b>LIGHTS</b> (lighting bars, ground support, in house lighting, etc.)	<b>Page 4</b>
<b>SOUND</b> (curfew, in-house PA, mixer position, etc.)	<b>Page 5</b>
<b>DOOR TIMES</b> (incl. curfews)	<b>Page 5</b>
<b>STAFF / CREW</b> (security / stewards, local crew + technicians, box office, etc.)	<b>Page 5</b>
<b>FACILITIES</b> (dressing rooms, showers, production office, internet access, etc.)	<b>Page 5</b>
<b>DETAILED VENUE TECHNICAL SPECIFICATIONS</b> (power, light, sound, video, Special Effects, Lighting rig layout)	<b>Page 6</b>
<b>TECHNICAL DETAIL FOR ADDITIONAL ROOMS WITHIN HEAVEN</b>	<b>Page 9</b>
<b>DRESSING ROOMS</b>	<b>Page 10</b>
<b>HEAVEN WET RIDER PRICES</b>	<b>Page 11</b>
<b>BOX OFFICE</b>	<b>Page 12</b>
<b>FRONT OF HOUSE / MERCHANDISE</b>	<b>Page 13</b>
<b>AFTERSHOW PARTIES</b>	<b>Page 14</b>

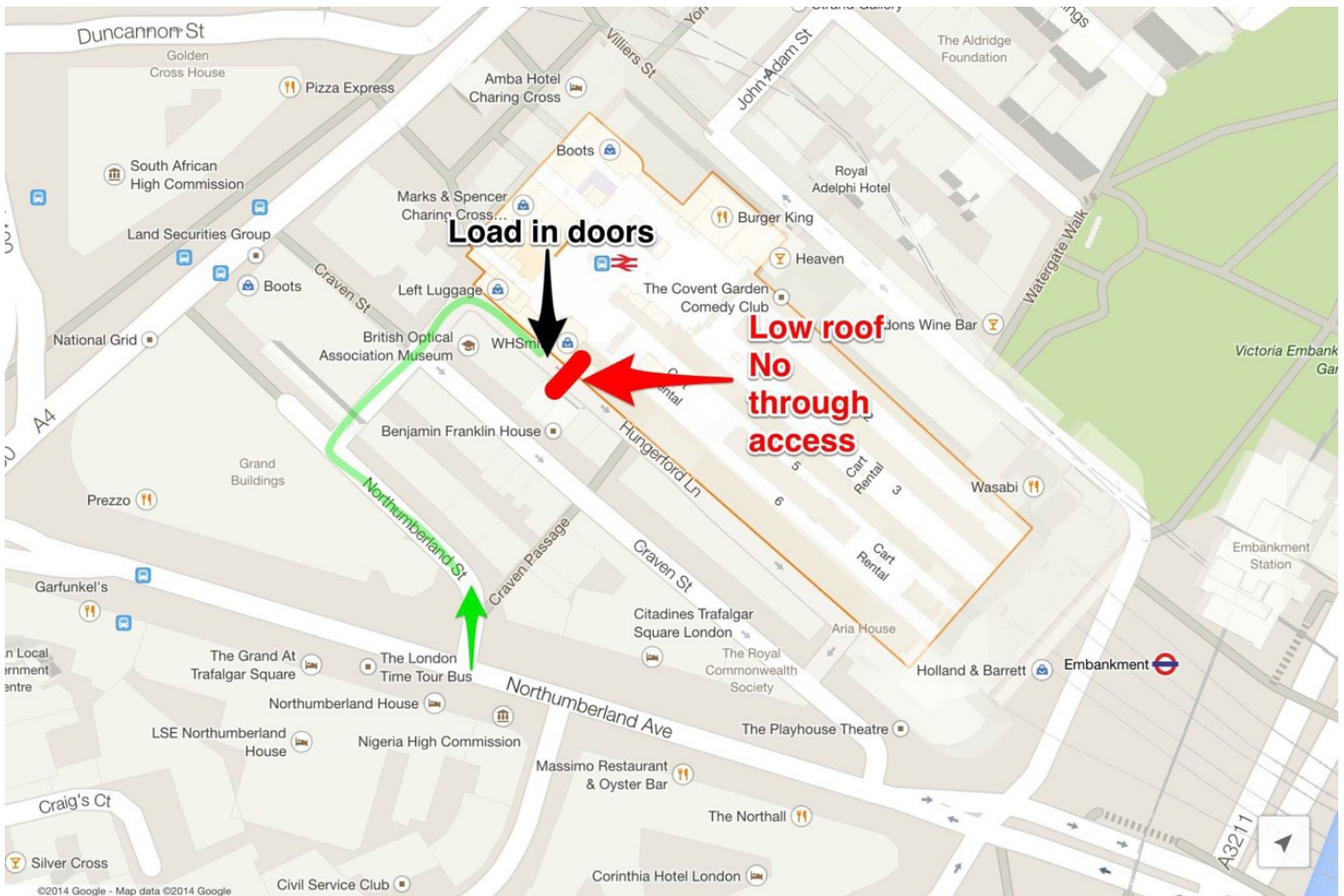
<b>CONTACTS</b>			
Roland Olah	General Manager	<a href="mailto:roland.olah@heavenlondon.co.uk">roland.olah@heavenlondon.co.uk</a>	020 7930 2020
Russell Peek	Booker	<a href="mailto:daytime@heavenlondon.co.uk">daytime@heavenlondon.co.uk</a>	
Russell Peek	Day Manager	<a href="mailto:daytime@heavenlondon.co.uk">daytime@heavenlondon.co.uk</a>	020 7930 2020
Boris Bosjnak	Production Manager	<a href="mailto:boris@heavenlondon.co.uk">boris@heavenlondon.co.uk</a>	
Alex Garcia	Head of Audio	<a href="mailto:balejandrogarcia@gmail.com">balejandrogarcia@gmail.com</a>	
Shane Finucane	Head of Lighting	<a href="mailto:shane.fin@sky.com">shane.fin@sky.com</a>	
Production Office			020 7389 6618
Production Office (fax)			020 7930 8306

**VENUE INFORMATION**

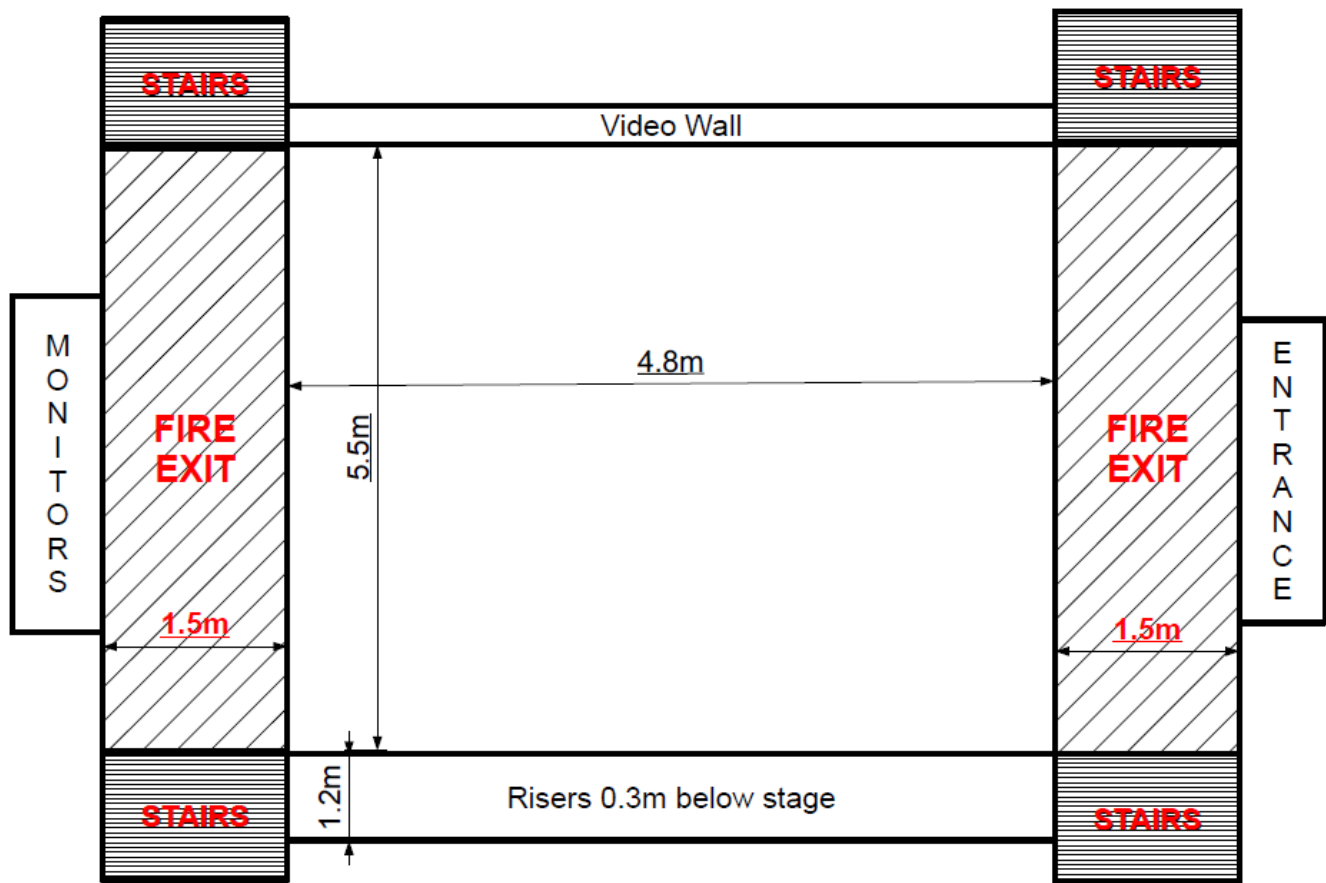
<b>Address:</b>	10a The Arches, Villiers St, London, WC2N 6NG ( <a href="#">map</a> )
<b>Rental:</b>	<p>The Hire Fee for a basic 7pm – 11pm live event is £2,145 plus PRS plus VAT verses £3.30 per head plus PRS plus VAT. For example if ticket sales are 800 the rental is £2,640 plus PRS plus VAT and if they're 450 the fee payable is the basic £2,145 plus PRS plus VAT.</p> <p>The Hire Fee will include a full complement of security staff for the duration of the event. It also includes one Monitor and one FOH sound technician and a Lighting Technician working ten hour calls. For shifts lasting longer than that the Hirer is charged at the rate of £30.00 per hour per technician. Guest list and Box Office staff and use of our Mojo Stage Barrier are also included.</p>
<b>Stage crew:</b>	Stage hands are not provided as part of the hire fee. If you require us to book them on your behalf please speak with Russell. Rates for stage crew are £125 per person per load in / out.
<b>Soundcheck curfew:</b>	Soundchecks must have been concluded no later than thirty minutes prior to doors to allow for house technical staff a break.
<b>Ticketing system:</b>	The venue does not operate its own ticketing system. We allow the hirer to sell the full allocation of saleable capacity through their own ticket outlets. We will require a weekly sales report of tickets sold and then a sales manifest on event day.
<b>Gig Age Restrictions</b>	<p>Our Live show restrictions are 14+ Under 16's need to accompanied by an adult of 18+.</p> <p>We require original physical (non-digital) photo ID and use ID scanning. Without ID we will refuse entry. Heaven Uses CLUB SCANNET all ID's will need to be scanned - this needs to be on any ticketing to customers so they are aware.</p>
<b>Local transport links:</b>	Embankment and Charing Cross Underground stations both 150 metres from venue. Numerous 24 hour bus routes available to all parts of Greater London from Trafalgar Square (200 metres) and The Strand (150 metres). British Rail Charing Cross (150 meters from Heaven) serving overland routes into Kent and Sussex. British Rail Waterloo (600 meters from Heaven) serving overland routes to all parts of the South and South West of England.
<b>Live events:</b>	<p>Since Heaven launched itself as a live music venue in January 2009 we have successfully staged more than four hundred live shows featuring amongst others Franz Ferdinand, The Cribs, Marmaduke Duke, Patrick Wolf, Jack Penate, The Rasmus, Backyard Babes, The Virgins, White Lies, Killing Joke, Little Boots, Enter Shikari, Throbbing Gristle, The Freemasons, Passion Pit, Silversun Pickups, White Denim, Master Shortie, Taking Back Sunday, Frankmusik, Temper Trap, Young Knives, The Foals, Basshunter, Natalie Imbruglia, The Rumble Strips, Bombay Bicycle Club, Fuck Buttons, Does It Offend You Yeah, Alpha Beat, 65 Days of Static, Manchester Orchestra, Bad Lieutenant, Oceansize, Fightstar, N*E*R*D, Ellie Goulding, Panda Bear, MGMT, Kasabian, Delphic, Yeasayer, Broken Social Scene, Crystal Castles, Lightspeed Champion, Caribou, Holy Fuck, A Place To Bury Strangers, Two Door Cinema Club, Beach House, Robyn, Django Django, Chromatics, Kindness, Polica, The Dandy Warhols, Archive, God Is An Astronaut, Disclosure, Owl City, Toy, Japandroids, Parovoz Stelar Band, Mayer Hawthorne, Tunng, CSS, The 1975, Tricky, Chris Carter and Cosey Fanni Tutti, Haim, These New Puritans, Flume, James Blake, John Grant, Theme Park, Wire, Camera Obscura, Jamie Lidell, Diiv, Awolnation, Everything Everything, Darwin Deez, Blood Red Shoes, King Charles, Hot Chip, Lucy Rose, Mika, Grimes, The Pains Of Being Pure at Heart, The Drums A-Ha, Interpol, The Wombats, Tame Impala, Lissie, Lykke Li, Fenech Soler, Liars, School of Seven Bells, Local Natives, Hercules &amp; Love Affair, Metronomy, Gang Of Four, The Duke Spirit, Chapel Club, Go! Team, Naked and Famous, Black Angels, Public Image Ltd, Santigold, WU LYF, fun., Oh Land, Azealia Banks, Azari &amp; III, Black Lips, Sleigh Bells and Les Savy Fav.</p>

**LOAD IN**

<b>Load in address:</b>	180 - 182 Hungerford Lane, London, WC2N 5NG ( <a href="#">map</a> )
<b>Load in details:</b>	Access via Craven Street - Height restriction 2.9m / 9ft6". Larger lorries / bus unload top of Craven Street. <b><u>No movement of heavy vehicles (artics / coaches) between the hours of 00:30 - 07:00.</u></b>  Stage Bar used as storage for live band shows. To be clear by 23:00 on curfew nights.
<b>Load in times:</b>	From 1pm - earlier by arrangement.
<b>Parking:</b>	We have spaces for the following: <ul style="list-style-type: none"> <li>• 1 x Saloon car or Standard Transit Van</li> </ul>



STAGE	
<b>Size:</b>	Depth Approx: 5.5m Width Approx: 4.8m  There are fire escape routes down either side of the stage. Both need to be kept free of obstruction during live performances on stage. Please See Below
<b>Clearance:</b>	Stage height at sides 3m rising to approx 5.3m at middle of arch.
<b>Flying points:</b>	None.
<b>Power:</b>	<ul style="list-style-type: none"> <li>• 1 x 32a single phase Ceeform</li> <li>• 1 x 63a single phase Ceeform</li> <li>• 1 x 125a three phase Ceeform</li> <li>• 1 x 32a three phase Ceeform</li> </ul>
<b>Barrier:</b>	Mojo Stage Barrier provided by venue and included in hire fee.
<b>Cable run from stage:</b>	40 meters to FOH.



LIGHTS	
<b>Lighting bars:</b>	One at back of stage; One at front of house. Please contact Head of Lighting for up to date plan.
<b>In-house lighting:</b>	Yes, please see page 7.
<b>Follow spots:</b>	None.

**SOUND**

<b>Noise curfew:</b>	None.
<b>In-house PA:</b>	Yes.
<b>Mixer positions:</b>	Stage right for monitors and balcony for FOH Main room.
<b>PA stack position:</b>	SL and SR.
<b>House risers:</b>	Yes - please ask.
<b>Decks/Club PA:</b>	Yes.

**DOOR TIMES**

<b>Usual door opening time:</b>	19:00, but can be earlier or later by arrangement.
<b>Curfew times:</b>	The following curfews apply for live gigs on those nights there are subsequent clubs events: <b>Mondays, Tuesdays, Wednesday &amp; Sundays: 22:00</b> <b>Thursdays &amp; Fridays: 21:30</b> <b>Saturdays: 21:15</b>

**STAFF / CREW**

<b>Security / Stewards:</b>	Venue will supply, included in hire fee.
<b>Local Crew:</b>	The Venue does not supply stage hands although we can arrange this on your behalf if you so wish. You would be charged £125 per stage hand per load in (out) assuming the load in / out was undertaken in less than four hours. ** These costs may increase as we use Black Box please contact in advance **
<b>Box Office / Guest List person:</b>	Venue will supply 2 people, included in hire fee.

**FACILITIES**

<b>Principle Green Room / Headlining Band dressing room:</b>	Situated above the Stage Bar.
<b>1 x Support Band dressing rooms:</b>	Situated in the Fourth Arch Staff Corridor.
<b>Showers:</b>	Available adjacent to the Support Band dressing rooms. Towels available from venue if required.
<b>Production office:</b>	Yes.
<b>Internet access:</b>	Wireless broadband available in Production Office and all dressing rooms. Please ask for password.
<b>Catering:</b>	We do not have catering facilities on site.
<b>Parking:</b>	We have spaces for the following at the rear of the venue: <ul style="list-style-type: none"> <li>• 1 x Saloon car or standard Transit Van</li> </ul>

## Detailed Venue Technical Specification

### POWER SPECIFICATION

<b>Power on stage:</b>	<ul style="list-style-type: none"> <li>• 1 x 125a three phase Ceeform (lighting)</li> <li>• 1 x 32a three phase Ceeform (lighting)</li> <li>• 1 x 63a single phase Ceeform (sound)</li> <li>• 1 x 32a single phase Ceeform (sound)</li> <li>• (Power located upstage left)</li> <li>• (Distro not supplied by venue)</li> </ul>
------------------------	---

### FRONT OF HOUSE SYSTEM

- 1 x P1 L'Accoustics System Processor
- 4 x L'Accoustics A15i Per Side - Front (3 x A15+ 1x A15 Wide)
- 3 x L'Accoustics A15i Per Side - Delays (2 x A15+ 1x A15 Wide)
- 4 x L'Accoustics KS28 - Subs
- 1 x Shoot box Behringer FOH Eurolive B205 D + 1 SM58 Switch Mic
- Mixing console – Digidesign Venue Mix Rack System: w/3 DSP cards, Firewire 400 x2 for 32 channels i/o

### MONITOR SYSTEM

<b>Floor Monitor / Stage Speakers:</b>	<ul style="list-style-type: none"> <li>• 10 x Turbosound TFM450</li> <li>• 2 x Turbosound Aspect TA500 Side Fills</li> <li>• 2 x Turbosound TA880L 15" bass</li> <li>• 1 x Turbosound B15 Sub Drum fill (6 wedge mixes including CUE + Drum Fill + Sidefills)</li> <li>• 1 x Shoot box Behringer FOH Eurolive B205 D + 1 SM58 Switch Mic</li> </ul>
<b>Amplification and Control:</b>	Turbosound MC2 E series Amplifiers and Turbosound LMS Processing
<b>Mixing Console:</b>	Digidesign Venue Mix Rack System w/3 DSP cards
<b>IEM SYSTEMS</b>	5 x Sennheiser G3 IEM systems

### MICS, STANDS, DI'S

- 10 x BSS AR133 DI boxes
- 4 x Radial J48 DI boxes
- 8 x Shure SM58
- 1 x Shure Beta58a
- 8 x Shure SM57
- 1 x Shure Beta57
- 2 x Shure Beta52
- 1 x Shure Beta91
- 4 x Sennheiser E604
- 3 x Sennheiser E904
- 8 x AKG C451B/ST
- 1 x Beyerdynamic M88 TG
- Assorted stands - short, tall, and round based.
- 5 x K&M Microphone stand with medium round base, black

#### Radio Mics

- 4 x Shure Beta58a UR2 tx
- 4ch. x UR4D+ rx
- 2x UA874E Active Antenna

**DJ EQUIPMENT**

- 2 x Pioneer DJM900 Nexus Mixer
- 1 x Pioneer DJM900 Nexus SRT
- 2 x Pioneer DJM A9
- 1 x Pioneer DJM900 NSX2
- 2 x Pioneer AlphaTheta CDJ-3000X
- 4 x Pioneer CDJ3000
- 4 x Pioneer CDJ2000 NSX2
- 2 x Pioneer CDJ2000
- 2 x Pioneer CDJ900

**LIGHTING & VIDEO (DANCE FLOOR)**

- 14 x Robe Robin Pointe
- 4 x 1k Par 64 shortnose
- 2 x Martin Atomic 3000
- 1 x Rear Screen: 9mm pitch, 1.7m x 3.6m, 192 x 1728 pixels
- 3 x LED Screens, 9mm pitch, 1.7m x 1.2m, 192 x 576 pixels
- 6 x Prolights Air6Pix
- 1 x Unique 21 Hazer

**LIGHTING & VIDEO (STAGE)**

- 1 x Viss LED Screen, 6mm pitch, 5.19m x 3.46m, 864 x 576 Pixels
- 6 x Source 4 750w (4 x 19°, 2 x 26°)
- 4 x Robe Pointe
- 4 x Robin LEDBeam 350
- 1 x Peasoup Phantom Hazer
- 2 x Martin Atomic 3000 Strobes
- 6 x Chauvet Slim Par Pro Pix
- 3 x Showtec Sunstrip
- 6 x 1k Par 64 Shortnose
- 1 HDMI + NDI Input

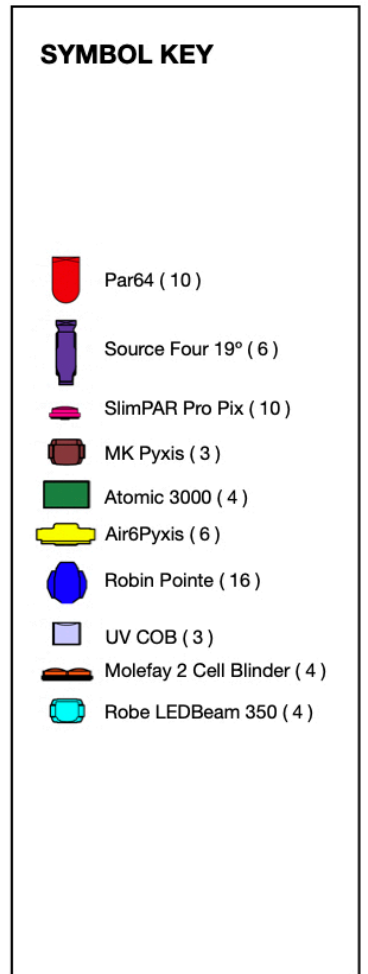
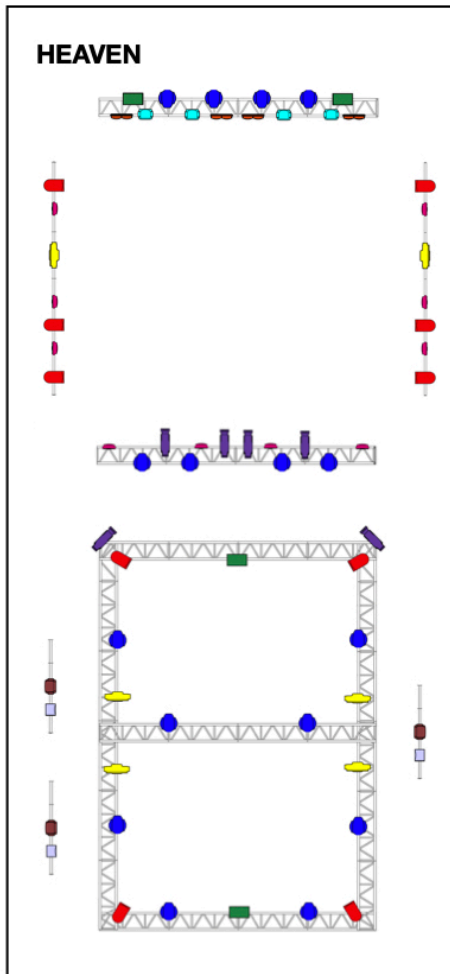
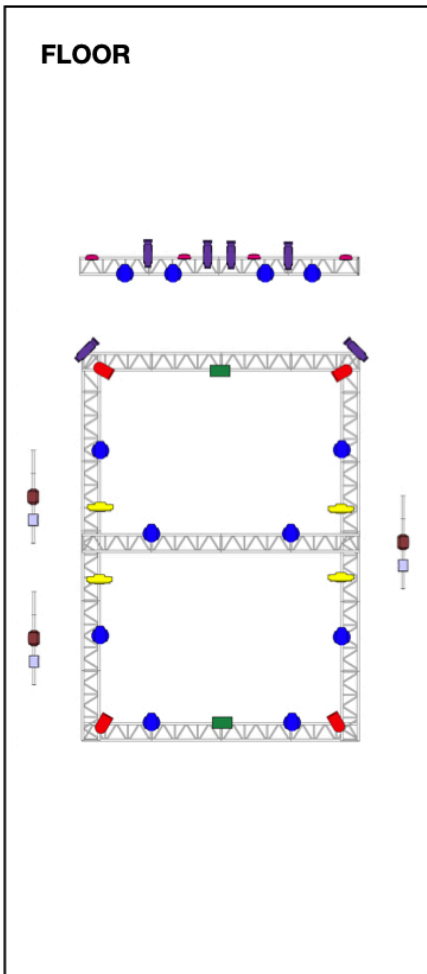
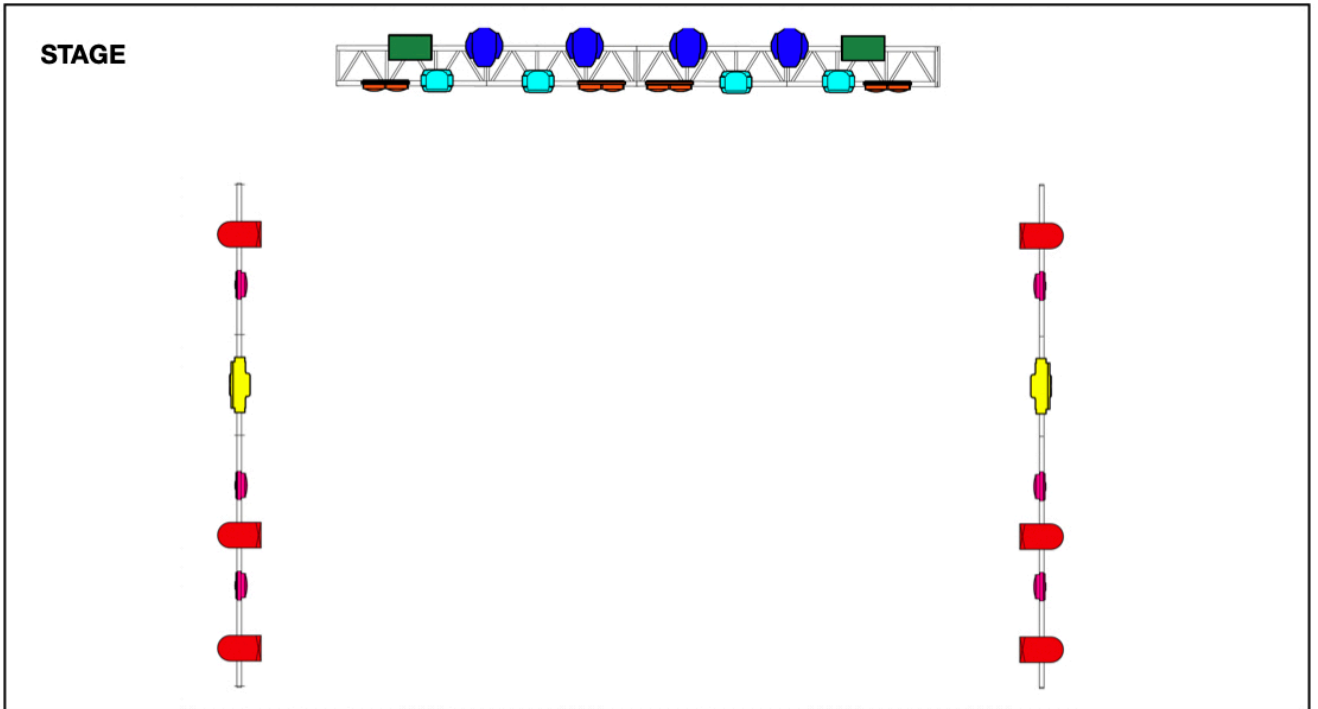
**FOH CONTROL (LIGHTING & VIDEO)**

<b>Video Control:</b>	<ul style="list-style-type: none"> <li>• 1 x Barco ImagePro II HD (HDMI + SDI + NDI)</li> <li>• 1 x Resolume Arena 7 Media Server</li> <li>• 1 x Elgato Stream Deck XL</li> <li>• 1 x TP Link TL - SG2210P Network Switch (NDI)</li> </ul>
<b>Lighting Control:</b>	<ul style="list-style-type: none"> <li>1 x Avolites Diamond 7 - 330, v18</li> <li>1 x Pangolin Quickshow</li> </ul>

**Special Effects**

<b>Effects:</b>	<ul style="list-style-type: none"> <li>• 4 x Magic FX Powershot II (Truecon)</li> <li>• 1 x Force FX EC-4 controller (4 channel Truecon)</li> <li>• 3 x Confetti cannon</li> <li>• 4 x Balloon nets</li> </ul>
<b>Use &amp; Hire Costs:</b>	<p>There is a hire charge of £250 per effect</p> <p>We require a minimum of two weeks notice for the use of any in house effect</p>
<b>Use of Lasers &amp; Additional notes</b>	<p>4 x Multicolour streamer cartridges included in powershot hire cost</p> <p>Different colour confetti / streamer cartridges or balloons available on request but require Two weeks notice to order. Any additional streamer cartridges required then these are charged at £12 per cartridge.</p> <p>Please give up to 4 weeks notice for use of lasers or any effects not mentioned above. We will be required to gain authorisation from Westminster council for authorisation.</p>

### Heaven Lighting Grid



## Technical Detail for Additional Rooms within Heaven

### STAR BAR

**Lighting & Video:**

- 1 x Avolites T1, v15
- 12 x Intimidator Spot 260X
- 1 x Unique 2 Haze
- 3 x Kinta FX
- 3 x 55" TV's

**Sound (club system):**

- 9 x L'Accoustics X12
- 2 x L'Accoustics KS28 Sub Subwoofers

### STAGE BAR

**Lighting & Video:**

- 1 x Avolites Titan One
- 6 x Robe 250AT Spots
- 4 x 55" TV's

**Sound:**

- 4 x Res 2 SH Tops
- 2 x FUNKTION ONE F218 subs
- 2 x FUNKTION ONE F118 subs
- XTA DP 226
- FUNKTION ONE E25 tops
- Crest Audio 7001 subs / FUNKTION ONE T25 subs

### DEPARTURE LOUNGE

**Lighting & Video:**

- 2 x Pin spot
- 1 x Mirrorball
- 1 x 6 channel dimmer
- 8 x 55" TV's
- 2 x 65" TV's

**Sound:**

- 4 x HK IL 12.1
- 2 x TurboSound TSW 718 Subs
- Soundcraft F1 12 Channel Mixer
- Turbosound LMS-700
- 3 x Crest Audio 4601

### BALCONY - MAIN ROOM

**Sound:**

- Rear Bar Over Balcony Delays : 2 x L'Accoustics A15i
- Rear Under Balcony Delays:
- 4 x L'Accoustics A10i (2 lines of delays)

## Dressing Rooms

DRESSING ROOMS SUMMARY	
<b>Capacity Stage Left:</b>	30
<b>Capacity 4th Arch:</b>	10
<b>Total:</b>	<b>44</b>

STAGE BAR MEZZANINE DRESSING ROOM (DRESSING ROOM NO. 1)	
<b>Location:</b>	Mezzanine - Green Room
<b>Capacity:</b>	30
<b>Size:</b>	7m x 3.3m
<b>Bathroom:</b>	Yes.

SUPPORT DRESSING ROOM (DRESSING ROOM NO. 2)	
<b>Location:</b>	Staff Corridor
<b>Capacity:</b>	10
<b>Size:</b>	5.4m x 3.6m
<b>Bathroom:</b>	Adjacent

SHOWERS / TOILETS	
<b>Showers:</b>	Adjacent to Dressing Room 2. Towels available from venue if required.
<b>Toilets:</b>	Available in Stage Bar Mezzanine dressing room and adjacent to Dressing Rooms 2.

For all queries regarding dressing rooms contact:

**Russell Peek (Day Manager).**

## Heaven Wet Rider Prices (January 2026)

BOTTLES / CANS (PER CASE)	
Stella	£28.00
Guinness Draught (can)	£35.00
Red Stripet (can)	£32.00
Smirnoff Ice	£28.00
VK (Flavours)	£25.00
Rekorderling Cider (can)	£30.00
Corona	£32.00
Peroni	£32.00
Budweiser	£28.00

SPIRITS (PER 700ML)	
Smirnoff Red	£15.00
Jack Daniels	£21.00
Southern Comfort	£20.00
Bell's Whisky	£16.00
Gordon's	£15.00
Bombay	£17.00
Jameson's	£22.00
Black Sambuca	£18.00
White Sambuca	£16.00
Absolut Vodka	£16.00
Captain Morgan	£16.00
Bacardi White Rum	£18.00
Malibu	£14.00
Courvoisier	£29.00
Disaronno	£18.00
Tequila	£19.00
Jagermeister	£18.00
Archers	£13.00
Cazcabel Tequila (Flavours)	£26.00

SOFT DRINKS (PER CASE)	
Pepsi / Pepsi Max	£19.00
Water	£11.00
Lucozade Energy Drink	£18.00
Red Bull	£30.00
7Up	£19

WINE (PER BOTTLE)	
Pinot Grigio	£7.00
Zinfandel Rose	£7.00
Merlot	£7.00

CHAMPAGNE (PER BOTTLE)	
Moet	£38.00
Veuve Clicquot	£35.00
Bollinger NV	£50.00
Proseco / Proseco Rose	£9.00

**Please note that rider prices may change in the future. Please ask for confirmation.**

**Box Office**

<b>CAPACITY - LIVE GIGS (GROUND FLOOR &amp; BALCONY ONLY) [STANDING ONLY]</b>	
<b>Ticketed admissions:</b>	1100
<b>Guests:</b>	100
<b>Total:</b>	<b>1200</b>

<b>CAPACITY - CLUB NIGHT (ALL ROOMS) [STANDING ONLY]</b>	
<b>All admissions including guests:</b>	1695
<b>Venue allocation:</b>	30
<b>Total:</b>	<b>1725</b>

For all queries regarding ticketing, as well as website/marketing contact:

**russell@heavenlondon.co.uk Tel: 020 7930 2020**

## **Front of House / Merchandise**

### **Merchandise Concession Agreement**

Heaven does not charge a merchandise commission. We do not generally supply staff for this and it would be expected that the Hirer would arrange. If you do require us to organise staff for this please advise us in good time. The location of the merchandising retail area is at the rear of the main hall room.

## **Aftershow Parties**

Heaven has two areas which are suited for aftershow parties the VIP area (DP) and The Balcony both areas are capable of taking up to 100 guests. Please speak with Darryl Connor / Russell Peek to arrange.

Please note that on a night we have a subsequent club night an aftershow party would not be possible,